



**YOUR APPLICATION GUIDE TO**

**BCS STUDENT CHAPTERS**

# CONTENTS

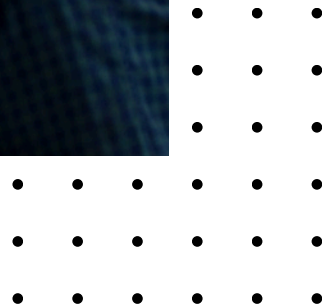
**02 WHO IS BCS?**

**03 WHAT ARE BCS STUDENT CHAPTERS?**

03 IS THERE A BCS CHAPTER WHERE I'M STUDYING?

**04 HOW DO I SET UP A STUDENT CHAPTER?**

**05 FAQ**



# WHO IS BCS?

BCS, The Chartered Institute for IT, is the professional body for the technology industry. We're on a mission to support the people who work in tech – to help them build a safe and bright digital future for everyone in society.

How do we do this? By working with key partners and our global membership community to improve computing education, share expertise, influence policy and ethical practice, raise professional standards, and support career progression.

It's all set out in our Royal Charter: *to promote and advance the education and practice of computing for the benefit of the public.*

If you're serious about your career in tech, BCS is here to help you to reach your potential – find out more about us at **[bcs.org](https://www.bcs.org)**.

# WHAT ARE BCS STUDENT CHAPTERS?

The BCS student chapter network brings talented computer science students together in universities and colleges across the UK and beyond to share information, debate ideas, enjoy social events and connect with the wider BCS community.

Chapters work in a similar way to a computing society, providing you with a platform for meeting up with likeminded students for discussion and debate across computing disciplines. They also give you the opportunity to connect with people already working in the industry including potential tech employers – so you can get a head start building your professional network.

Run **by** students, **for** students, each chapter is set up by a committee of students who organise events and catch-ups for the chapter members. Our dedicated chapter team at BCS is on hand to help the committee manage their activities, providing marketing support, funding and more.

## WHY JOIN A STUDENT CHAPTER?

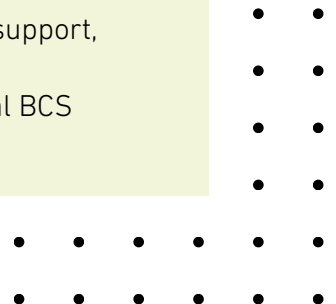
- Get to know likeminded students on campus and in other universities across the chapter network, for both studying and socialising
- Develop your tech knowledge and skills through discussion and debates, workshops, hackathons, guest speaker events and more
- Start building your own professional network by connecting with BCS members, tech employers and practitioners in the local area
- Increase your confidence and boost your extra-curricular credentials – ‘committee member’ will look great on your CV!

## IS THERE A BCS STUDENT CHAPTER WHERE I'M STUDYING?

There are over 25 universities and colleges in the BCS chapter network – visit [bcs.org/studentchapters](https://www.bcs.org/studentchapters) to find out where they are. If there isn't already a student chapter where you're studying, why not set one up yourself!

### ENJOY ALL THESE BENEFITS AND MORE WHEN YOU GET INVOLVED WITH BCS STUDENT CHAPTERS:

- Dedicated student chapter newsletter
- Event funding and free BCS merchandise
- Guest speakers from across the industry
- Collaboration with the Early Careers Executive group
- Employability and career support, events and resources
- Partnership with your local BCS branch network

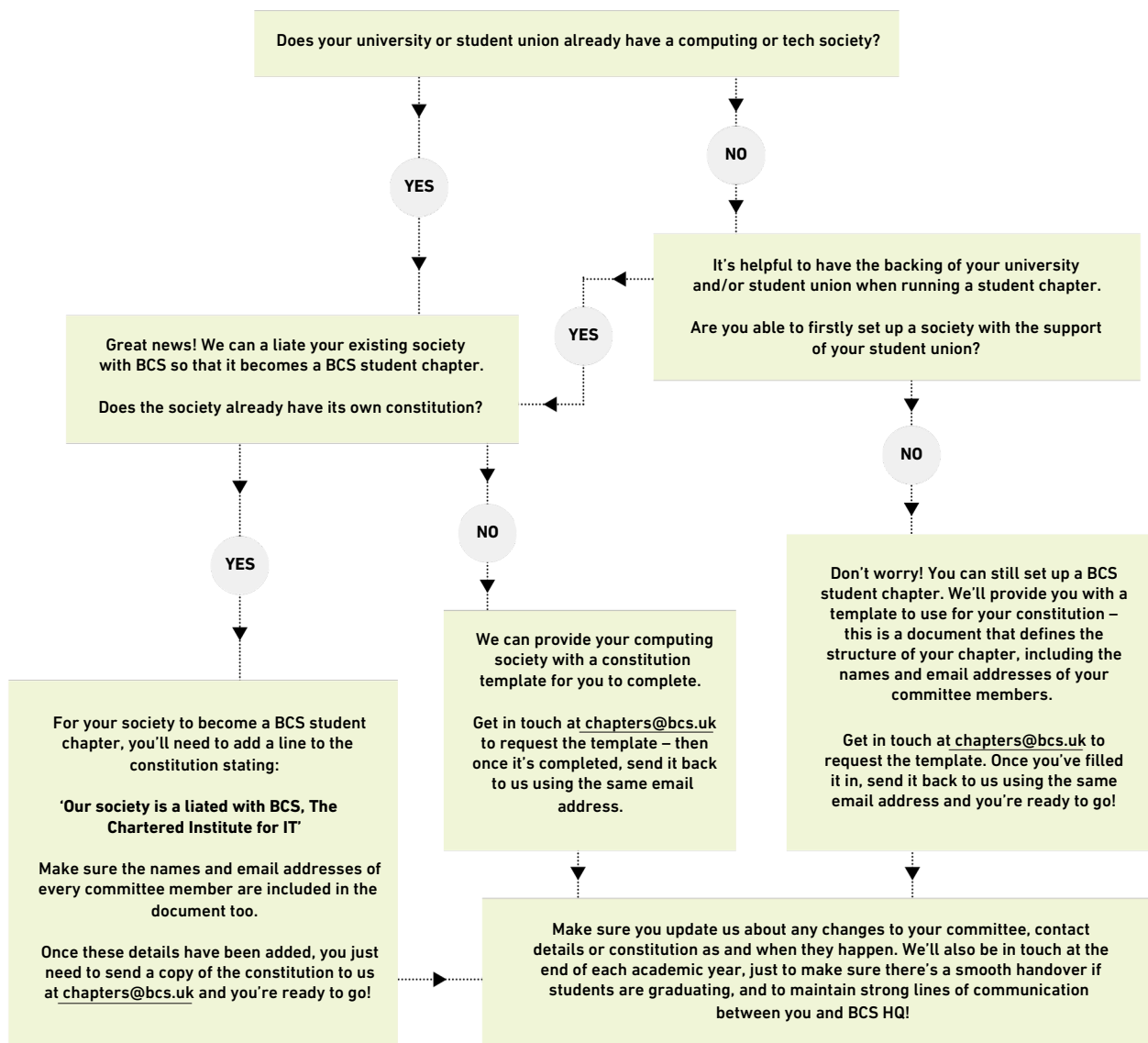


# HOW DO I SET UP A STUDENT CHAPTER

Starting up a BCS student chapter is a simple process and our dedicated chapters team at BCS are on hand to support you every step of the way.

Firstly, be sure to check there isn't already a BCS student chapter at your university or college – you can find the full list of chapters at [bcs.org/studentchapters](https://www.bcs.org/studentchapters).

If your place of study isn't on the list, follow the question pathway below to identify the right course of action to get you started:



## FAQs

### Do you have to be a BCS member to be a part of a student chapter?

No. We encourage everyone involved with student chapters to become a BCS member so they can make the most of everything we have to offer, but it's not a requirement.

### For how long can I be a member of a student chapter?

You can be a member of your student chapter for the duration of your university degree course. Your chapter membership automatically ends when you graduate.

### How do I link up with the BCS community in my local area?

The BCS branch network spans the UK. Each branch runs its own local events which you can go along to for the chance to network with technology professionals in your area, across wide-ranging industry sectors.

We also have over 50 specialist groups where you can connect with people interested in specific tech disciplines. Whether you're passionate about AI, green IT, software development or many of the other fields of IT, you'll find a community of practitioners at BCS who share your enthusiasm!

Our branches and specialist groups host in-person, virtual and hybrid events making it easy to meet up with new people, learn new things and develop your own professional network across the industry.

For a full list of specialist groups and branches listed by area, go to [bcs.org/groups](https://www.bcs.org/groups)

### How can I get involved with BCS after I leave university?

As you take your first steps in the IT workplace, it's more important than ever to remain a part of our thriving and supportive professional community. If you've recently graduated, you can become a BCS member for **just £25 for your first year** – contact [customerservice@bcs.uk](mailto:customerservice@bcs.uk) to receive your graduate discount code.

As a BCS member, you'll enjoy a host of valuable benefits giving you the very best start to your tech career. These include:

- *BCS mentoring network*

Hit the ground running with tailored guidance and support from an experienced practitioner in your chosen field

- *Branches and specialist groups*

Make new connections, debate the latest tech, share knowledge and ideas, and discover new opportunities

- *Online BCS Community*

Join the chat in our online forum, get to know other members and have your say on the topics of the day

- *SFIPlus skills framework*

Use the industry framework to benchmark your skills and identify the next steps in your career development

- *Books and training*

Keep your knowledge and skills up to date with exclusive development tools, e-learning and information resources

# WANT TO FIND OUT MORE ABOUT THE BENEFITS OF BCS STUDENT MEMBERSHIP?

Scan the QR code now!

Or visit [bcs.org/student](https://www.bcs.org/student)



For further information please contact: **BCS**

The Chartered Institute for IT

**T** +44 (0)1793 417 417

[www.bcs.org](http://www.bcs.org)

© 2024 Reserved. BCS, The Chartered Institute for IT

All rights reserved. No part of this material protected by this copyright may be reproduced or utilised in any form, or by any means, electronic or mechanical, including photocopying, recording, or by any information storage and retrieval system without prior authorisation and credit to BCS, The Chartered Institute for IT.

Although BCS, The Chartered Institute for IT has used reasonable endeavours in compiling the document it does not guarantee nor shall it be responsible for reliance upon the contents of the document and shall not be liable for any false, inaccurate or incomplete information. Any reliance placed upon the contents by the reader is at the reader's sole risk and BCS, The Chartered Institute for IT shall not be liable for any consequences of such reliance.

