

BCS Professional Certification

Instructions for Questionmark Secure Installation



Instructions for Questionmark Secure Installation

BCS uses Questionmark Secure to deliver its online classroom assessments.

Questionmark Secure must be installed on every PC on which examinations will be conducted.

This document provide you with guidance on installing Questionmark Secure.

The following web browsers are supported and can be used to take assessments.

Please check what version of the application is used by your organization.

Browser	OnDemand
Internet Explorer 7	✘
Internet Explorer 8	✘
Internet Explorer 9	✔
Internet Explorer 10	✔
Internet Explorer 11	✔
Firefox 3	✔
Firefox 4+ *	✔
Safari 4	✔
Safari 5	✔
Chrome * ^	✔
Opera	✔
Android browser 2+	✔
Android app	✔
iOS 4+	✔
iPhone/iPad app	✔



Instructions for Questionmark Secure Installation

Install Questionmark Secure



Install Questionmark Secure for Windows



Install Questionmark Secure for Mac



Install Questionmark Secure for iPad

1. Go to: <https://www.questionmark.com/content/get-questionmark-secure>
2. Select the operating system you would like to install Questionmark Secure to

QSB_5.8.1.4_EN (4).exe finished downloading.

Run

Open folder

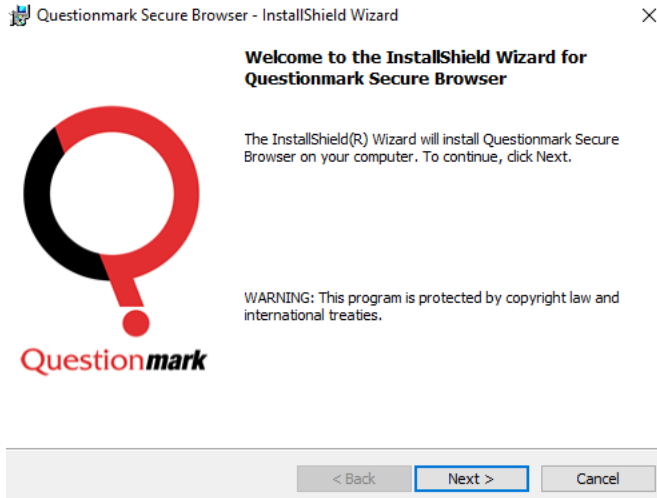
View downloads



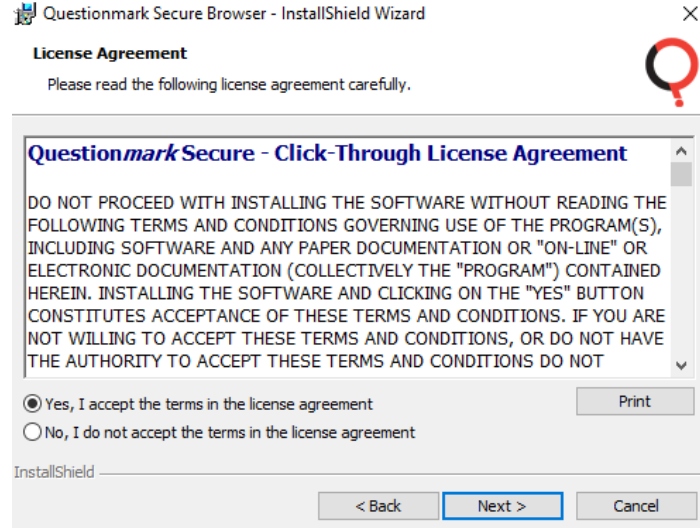
3. Click 'Run'



Instructions for Questionmark Secure Installation



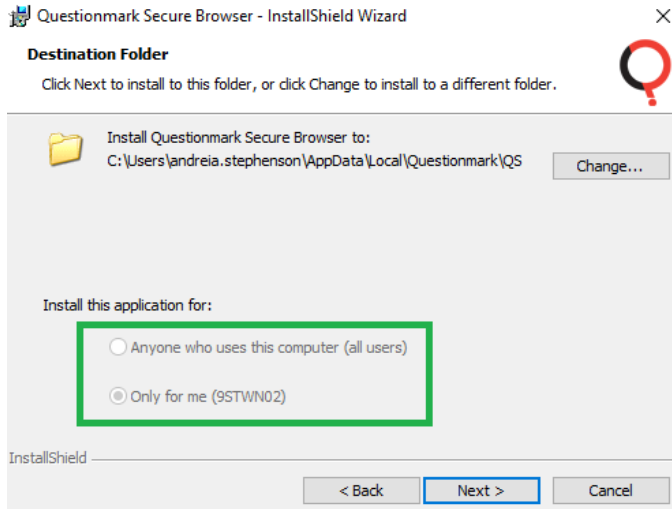
4. Click 'Next'



5. Read the terms in the licence agreement
6. Click 'Yes, I accept the terms in the licence agreement'
7. Click 'Next'

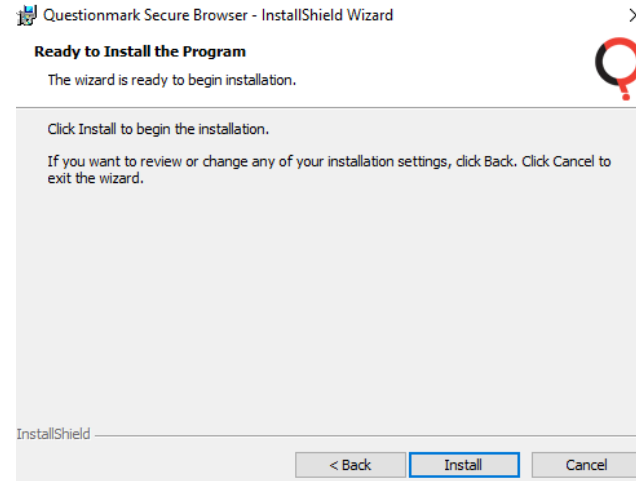


Instructions for Questionmark Secure Installation



8. Select the user you would like to install Questionmark Secure for

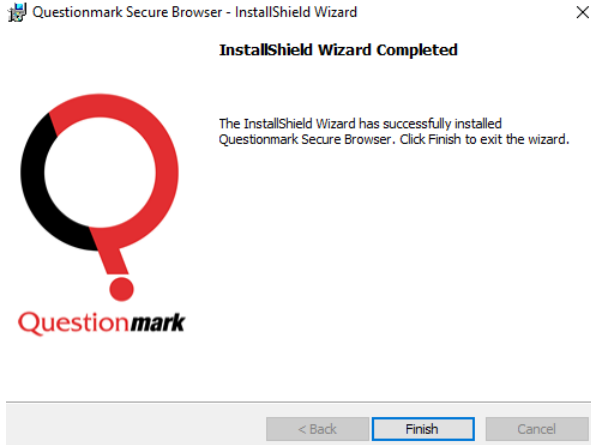
9. Click 'Next'



10. Click 'Install'



Instructions for Questionmark Secure Installation



11. Click 'Finish'